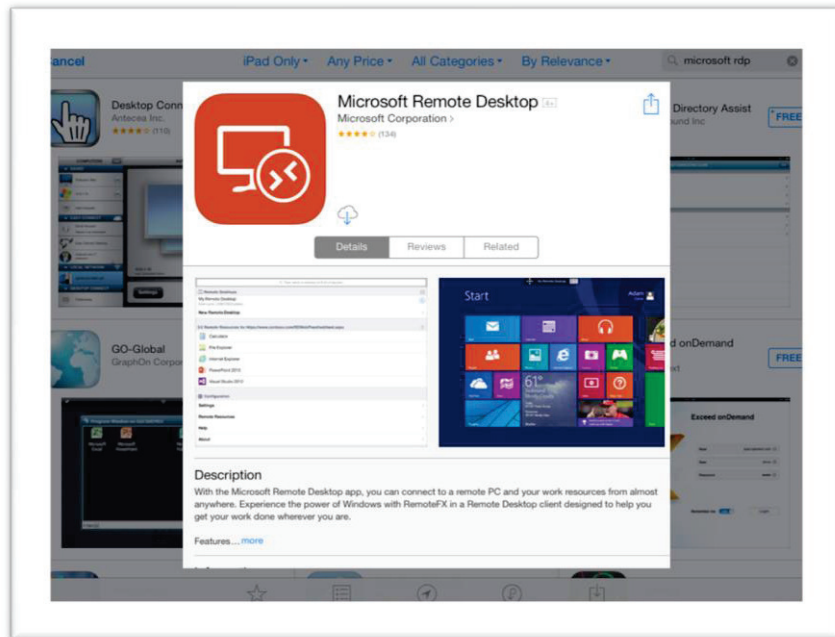


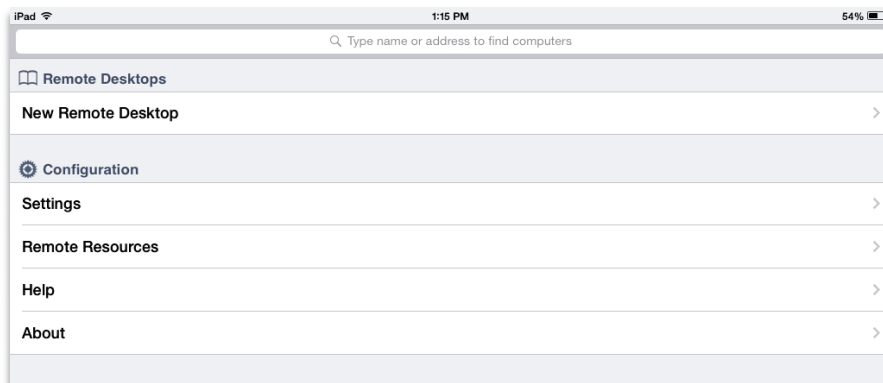


# Installing and Connecting to AgriNet with Microsoft's RD Client for iOS

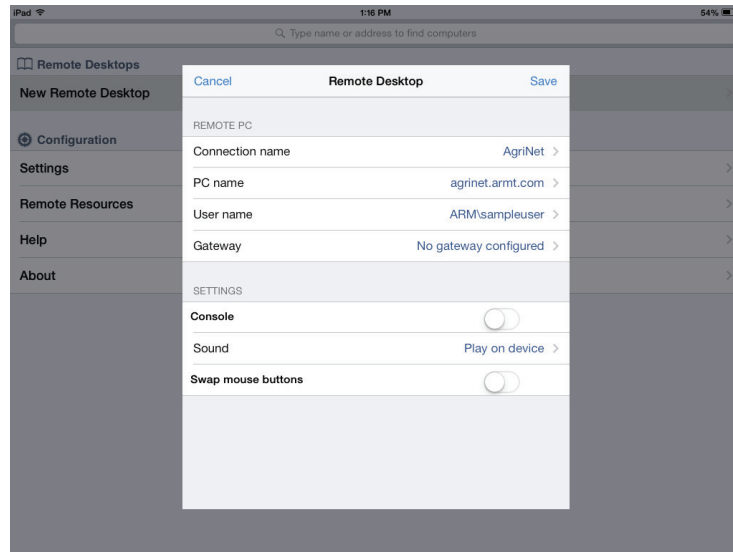
- In the app store, search for *Microsoft RDP*. There will be an app titled *Microsoft Remote Desktop* with a red icon to download:



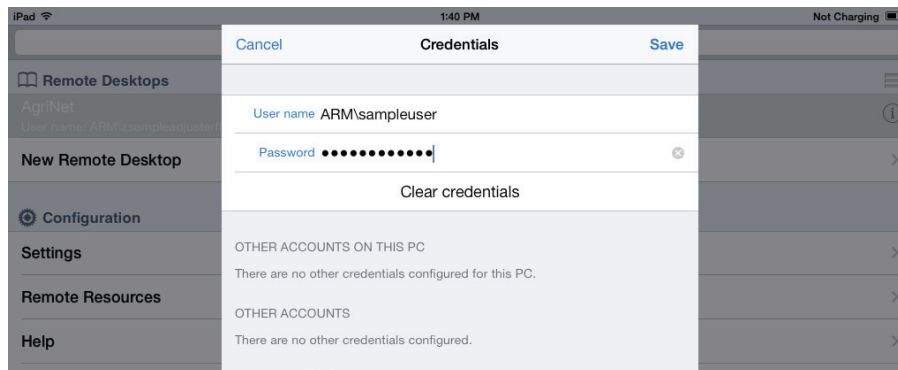
- Once the RD Client app is downloaded, open it. You will be presented with this screen:



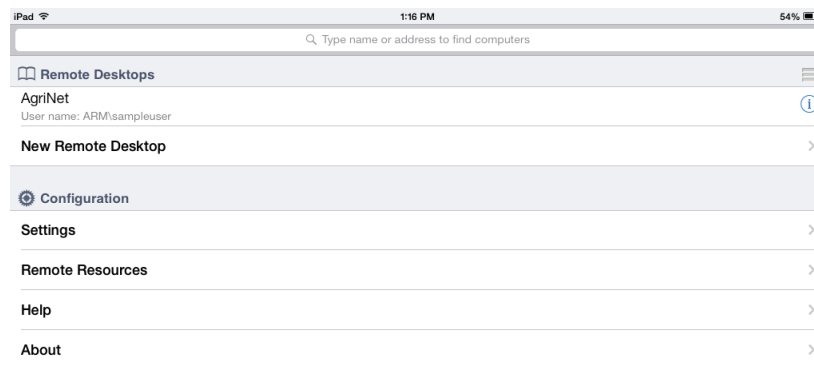
- Tap on *New Remote Desktop* to create a new connection.
- The *Connection name* should be **AgriNet** and the *PC name* is **agrinet.armt.com**



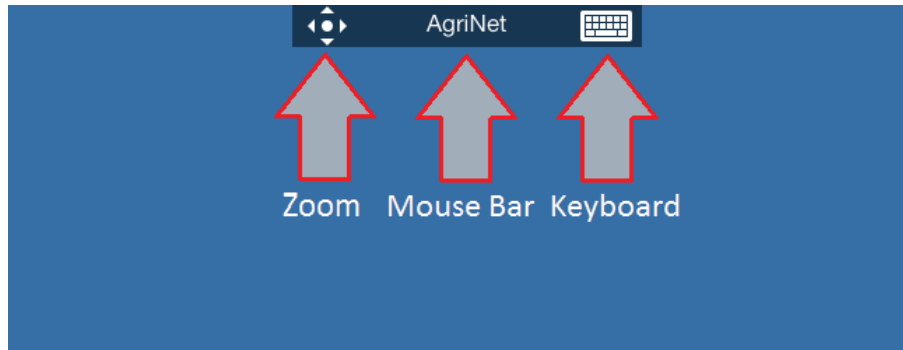
- Tap into the *User name* field, and enter your credentials as **ARM\username** and **your password**



- Tap on **Save** in the top-right corner in the credentials window and then **Save** again in the connection window to save the connection.
- To connect to **AgriNet**, tap on the newly created connection. If you made a mistake, you can edit the connection using the **i** button on the right-hand side of the connection.



- Once connected, the interface may be different than what you are used to. To zoom, tap on the zoom symbol at the left-hand side of the connection bar. To change mouse modes, tap the connection name at the top of the window and then on the mouse button on the left-hand side of that window. To toggle the keyboard, tap the keyboard icon on the right-hand side of the connection bar.



If you have any issues installing, connecting, or using the Microsoft RD Client app, please contact [helpdesk@arnt.com](mailto:helpdesk@arnt.com)